



Collector Pans

A modular system of steel pans and drains that collect and divert liquid spills.

Collector Pans provide environmental protection against spilled diesel fuel, oil, grease and other pollutants common at rail sites, fueling stations and industrial areas. They form part of a modular system of steel pans and drains that are easily installed onto new or existing tracks. Collector Pans cover the area between and immediately outside the rails. Cross drains installed at right angles to the track between the ties carry waste and rainwater into under-drains and on to downstream treatment and disposal facilities.

TYPICAL APPLICATIONS

- Railroads
- Washing and Cleaning Facilities
- Fueling Stations
- Industrial Applications

Collector Pans are easily removed and reinstalled for track maintenance or for new yard layouts.



COLLECTOR PANS FLOAT ON TIES MAKING THEM UNAFFECTED BY NORMAL VERTICAL MOVEMENT



COLLECTOR PAN WALKWAY



ENVIRONMENTAL PROTECTION

Capture spilled diesel fuel, oil, grease and other pollutants including heated liquids.



DURABLE

Fabricated from hot-rolled steel which withstands damage or impact even in cold weather.



MULTI-PURPOSE

Suitable for a broad range of railroad and industrial applications where liquids are transferred.



COST EFFECTIVE

Quick and simple modular installation on new or existing tracks.



RAIL SPLICE



CROSS DRAIN

FOR RAILWAYS AND INDUSTRY

Designed for rail 51 kg or heavier.

MODULE DATA	TYPE 1		TYPE 2
	(mm)		(mm)
Module width - out to out of pan flanges	3,454	4,267	2,996
Module length - centre to centre of cross drains ¹	5,791	5,791	5,791
Pan length - actual	5,613	5,613	5,613
Width of crosswalk ²	610	610	610
Outside Diameter (O.D.) of cross drain downspout	141	141	141
Pan thickness (nominal)	4.37	4.37	4.37

¹This dimension can be modified to 6,096mm

²Crosswalk also available in 914mm wide

GRATING OPTIONS

- Black
- Galvanized
- Fibre Reinforced Polymer (FRP)
- None
- 610mm (24") cross-drains only
- 914mm (36") cross-drains only
- Full coverage

PAN CONFIGURATION

- Standard
- Centre pans only
- Increased cross-drain spacing
- Zee Flashing - for abutting pans against concrete aprons / platforms

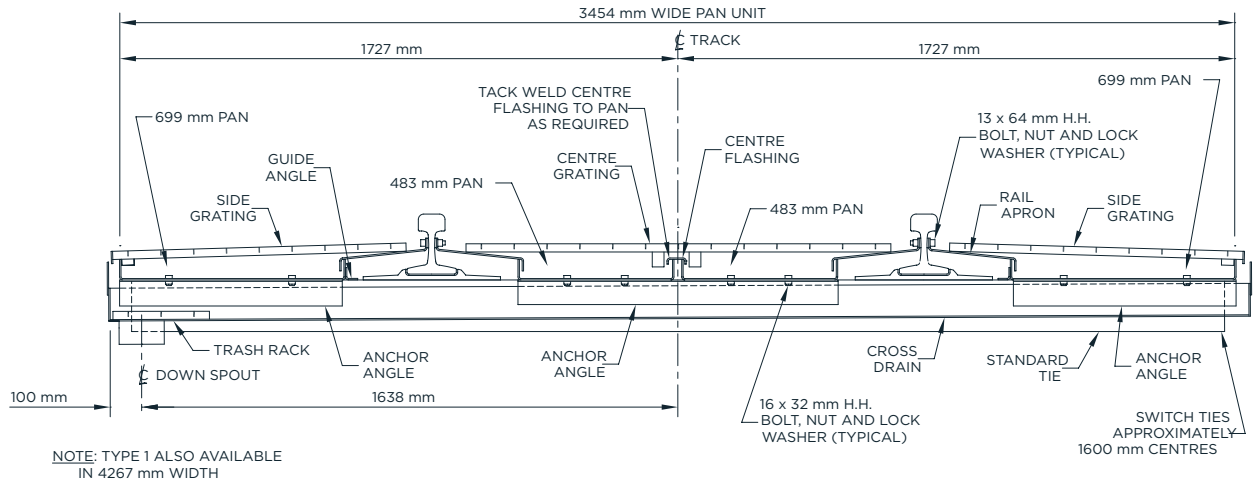
NOTE:

All components of the Armttec collector pan system except grating, fasteners and non-metallic items are fabricated from commercial quality hot-rolled steel meeting ASTM Designation A-569. Non-skid gratings are used. If required, pans and steel grating can be hot-dipped galvanized.

TYPE 1

Armtec **TYPE 1** collector pans are generally used at fueling areas, washing facilities and industrial tracks with heavy waste loads. Armtec **TYPE 1** collector pans fit slightly tighter than **TYPE 2** collector pans to provide better protection against spills. They are designed for protection in the most critical areas.

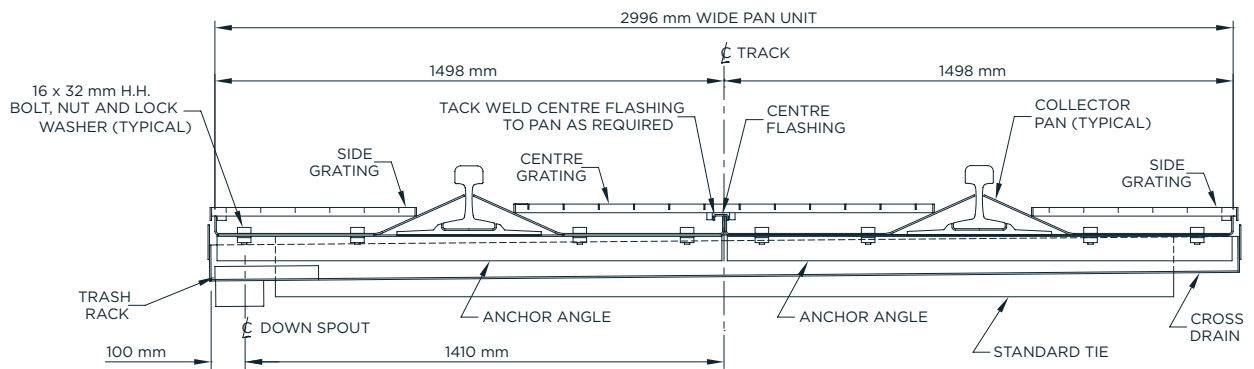
CROSS SECTION



TYPE 2

TYPE 2 pans are designed for tracks and areas with less waste. They are also used for fueling areas, especially those with concrete platforms adjacent to the tracks. They are more adaptable than **TYPE 1**, and can be easily fit where curves, platforms and turnouts are involved.

CROSS SECTION



NOTE:

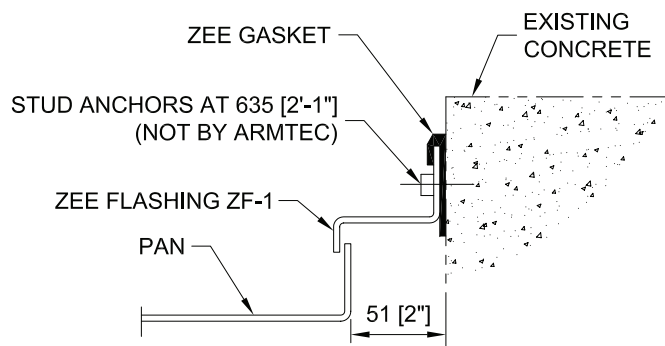
- Custom widths are available for both Type 1 and Type 2 upon request
- Please contact an Armtec Sales Representative for help in selecting the correct type for your application

INSTALLATION

Armtec Collector Pan's simple modular design makes installation quick and easy. Typical crew sizes consist of one welder and four or five unskilled labourers. Tools typically required for Collector Pan installation include burning equipment, welding equipment, appropriate wrenches, 8" C-clamps or large vice-grips and a track mounted dolly to move pans from storage to installation.

LABOUR	LOCATION
Field Welding	Centre flashing, cross-drain end plate and grating restraint angles
Field Burning	Pans at rail splices and pans along curved track
Field Drilling	Anchor angle / pan connection

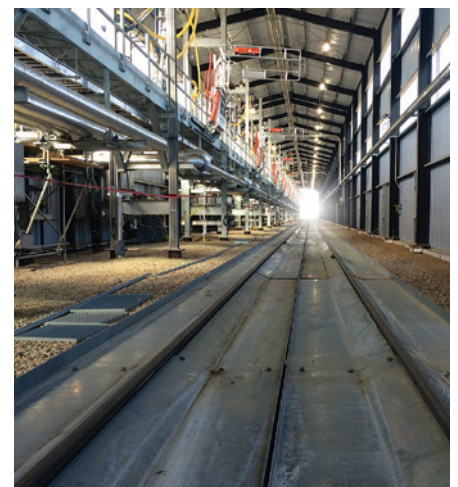
Detail of zee flashing attachment onto existing concrete



PAN ONLY CONFIGURATION AT CANOLA OIL OFFLOADING FACILITY - PORT MOODY, BC



Quick and easy installation with minimal labour. Collector Pans can be removed for track maintenance or repositioned for new yard layouts.



COLLECTOR PAN PROJECT FOR CRUDE OIL LOADING FACILITY - KERROBERT, SK

ATLANTIC

Shediac, NB
Sackville, NB
Truro, NS
Bishop's Falls, NL
St. John's, NL

CENTRAL

Cambridge, ON
Comber, ON
Forest, ON
Guelph, ON
Orangeville, ON
Peterborough, ON
Sudbury, ON
Thunder Bay, ON
Walkerton, ON
Woodstock, ON
St-Augustin, QC
St-Clet, QC

PRAIRIES

Calgary, AB
Edmonton, AB
Grande Prairie, AB
Ponoka, AB
Redwater, AB
Winnipeg, MB
Regina, SK
Saskatoon, SK

WESTERN

Dawson Creek, BC
Genelle, BC
Langley, BC
Nanaimo, BC
Prince George, BC



Find out how **Collector Pans** can be used on your next project.
Call **1-800-565-1152** or visit armtec.com

